

Water Allocation – NSW Murray

Dr Shahadat Chowdhury
Manager, Water Allocation Unit
Water Group

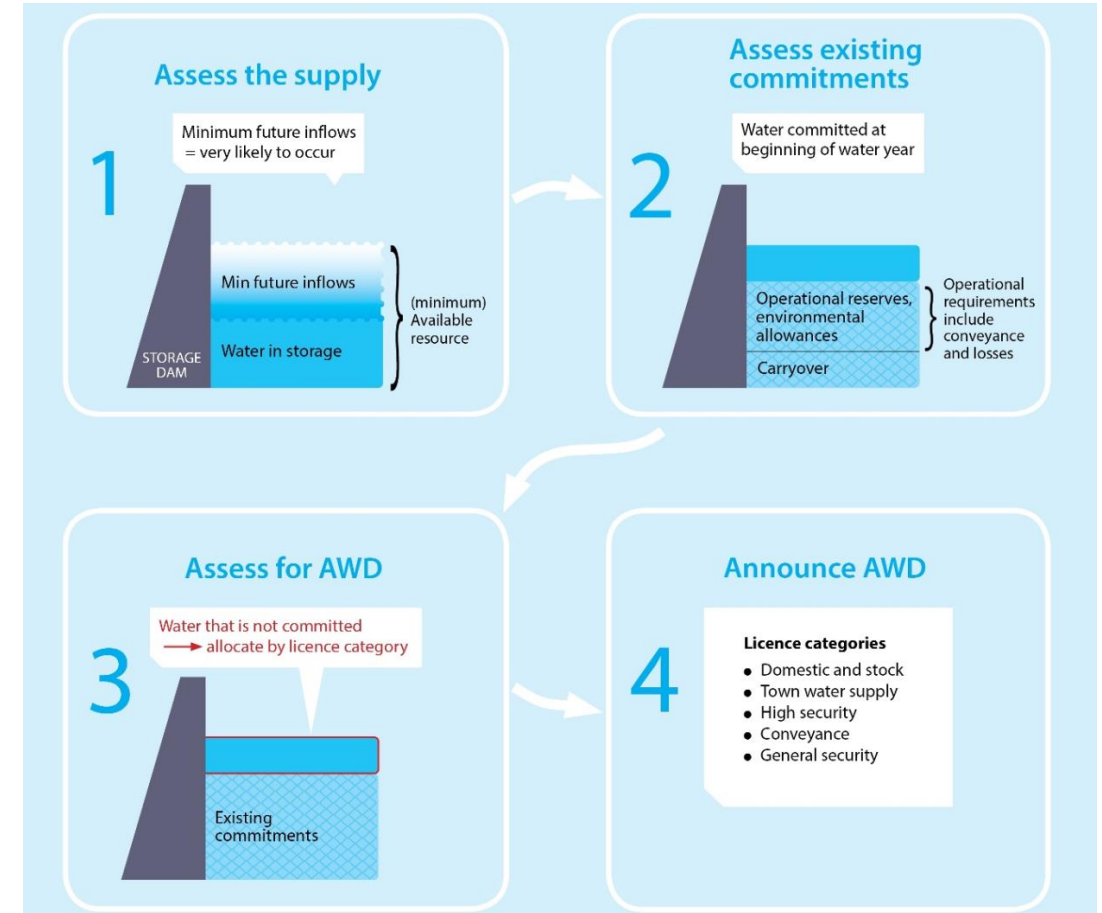
Murray Forum
6 August 2025

Water Allocation – reg rivers

Surplus = Current Storage + Future Inflow

– Commitments – Overhead

- Surplus is allocated away in priority order.
- Allocations are based on low risk. Assumes dry outlook: low future inflow, high overhead.
- Assessed monthly. Surplus when inflow is higher and/or delivery loss is lower than budgeted.
- Priorities and accounting rules are given in the water sharing plan. Little discretion.
- Allocated water is owned by the licence holders.



Water Allocation in NSW Murray

-
- MDBA distributes resources to states following MDB Agreement
 - MDBA submits bulk resource assessment for approval to WLWG
 - NSW delegate to WLWG are S Chowdhury-DCCEEW and J Belej-WNSW

 - The department allocates away NSW bulk resource as per our water sharing plan
 - The department publishes allocation statement and issues AWD Order (if any)
 - 2:30 pm every 1st and 15th calendar day, if holiday- next working day, except 2 Jan
 - WNSW credits the accounts after receipt of AWD Order.

Last Allocation Statement

Department of Climate Change, Energy, the Environment and Water
Water Allocation Statement



1 August 2025

NSW Murray and Lower Darling Regulated Rivers

Water allocation update

General security (GS) licences in the NSW Murray Regulated Rivers Water Source have received an allocation **increase of 1% of their** entitlement, and conveyance entitlements have also received their commensurate allocation increases.

The 1% increase in this assessment brings the cumulative general security allocation for the 2025–26 water year to 2%. When combined with the average carryover of 31%, the total water availability to date stands at 33%.

The recent improvement in water availability is primarily due to significant inflows into the storages. This assessment incorporates dam volumes as of the end of June, inflows received to date and forecast recessions. The next resource assessment is expected to provide a more comprehensive picture, capturing the full extent of resource improvements resulting from the recent wet conditions.

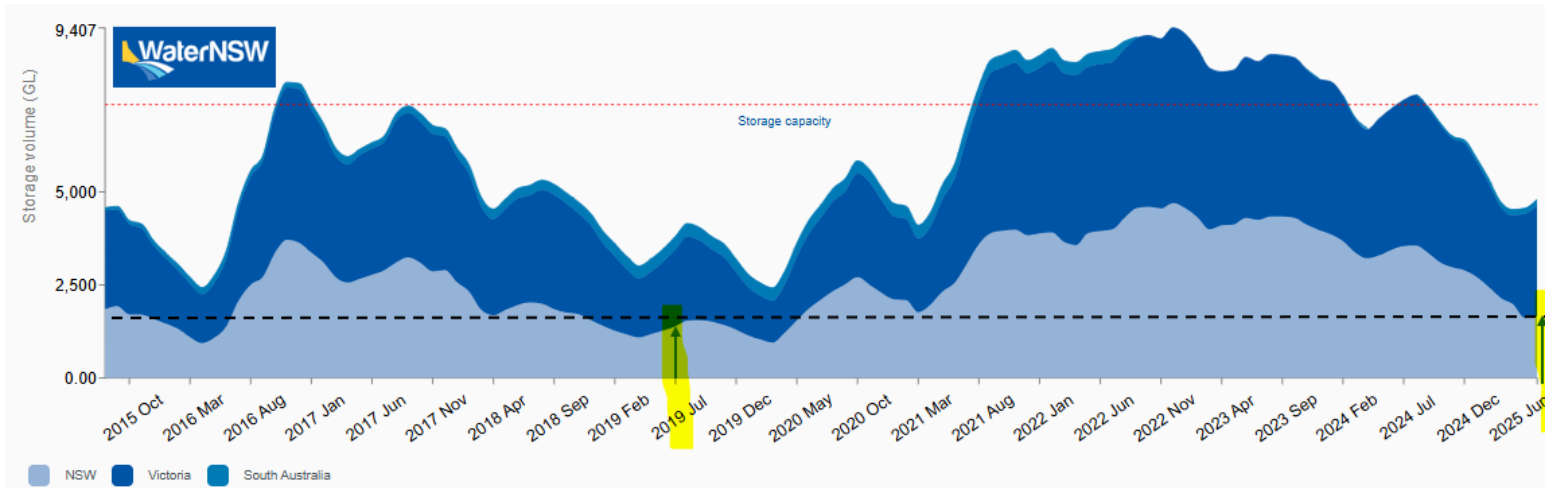
All entitlements in the Lower Darling Regulated River Water Source were fully allocated on 1 July 2025; hence, no further allocation is possible in this water year.

| 30 June 2025 | NSW share* (GL/%) |
|-----------------------|-------------------|
| Dartmouth Dam | 856 (22%) |
| Hume Dam | 568 (19%) |
| Lake Victoria | 140 (21%) |
| Menindee Lakes System | 403 (23%) |
| Total | 1,967 GL |

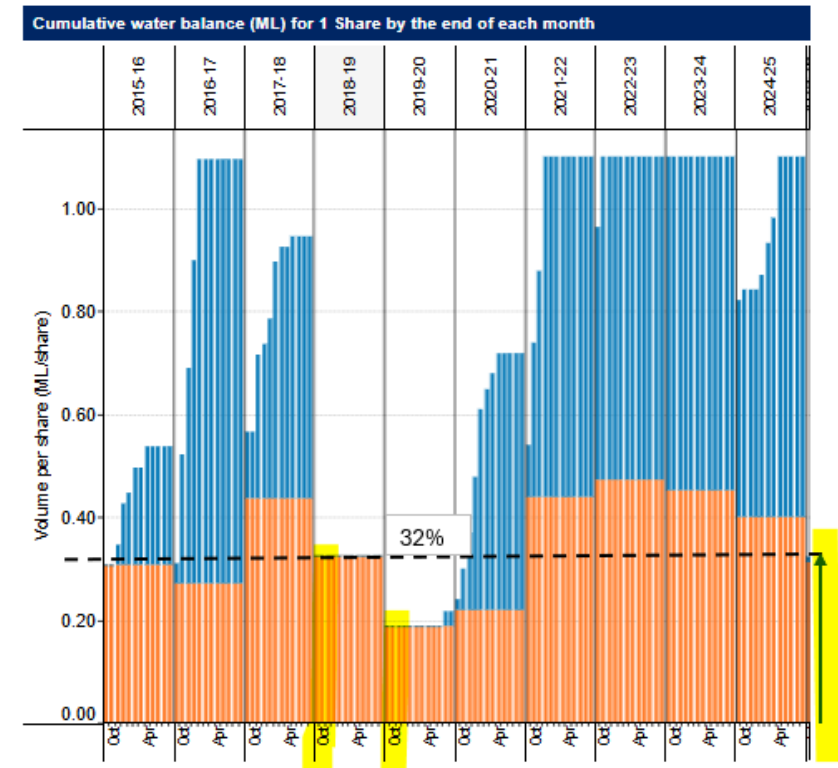


| Resource distribution (1/8/2025 to 30/6/2026) | Volume (GL) |
|--|-------------|
| Available resource for allocation | 1,118 |
| Storage volumes NSW share ⁽¹⁾ | 1,967 |
| Future resources ⁽²⁾ | 1,036 |
| less SA commitments and overhead ⁽³⁾ | (1,885) |
| <i>less</i> | |
| Planned environmental water ⁽⁴⁾ | 46 |
| Domestic and stock, local water utility balance ⁽⁵⁾ | 60 |
| High security balance ⁽⁵⁾ | 178 |
| Conveyance balance ⁽⁵⁾ | 168 |
| General security balance ⁽⁶⁾ | 559 |
| Wakool allowance ⁽⁷⁾ | 46 |
| Reserves for critical human needs ⁽⁸⁾ | 61 |
| 2026/27 higher priority reserve ⁽⁹⁾ | 0 |
| <i>equals</i> | |
| Surplus (or deficit) ⁽¹⁰⁾ | 0 |

NSW Murray Allocation

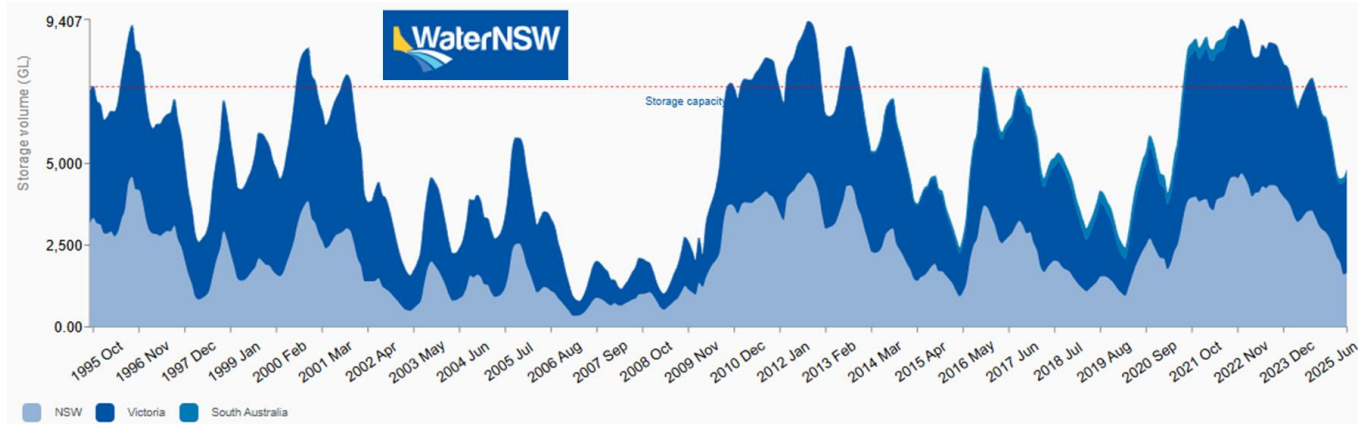


Allocation to date 2%
Carried over 31%

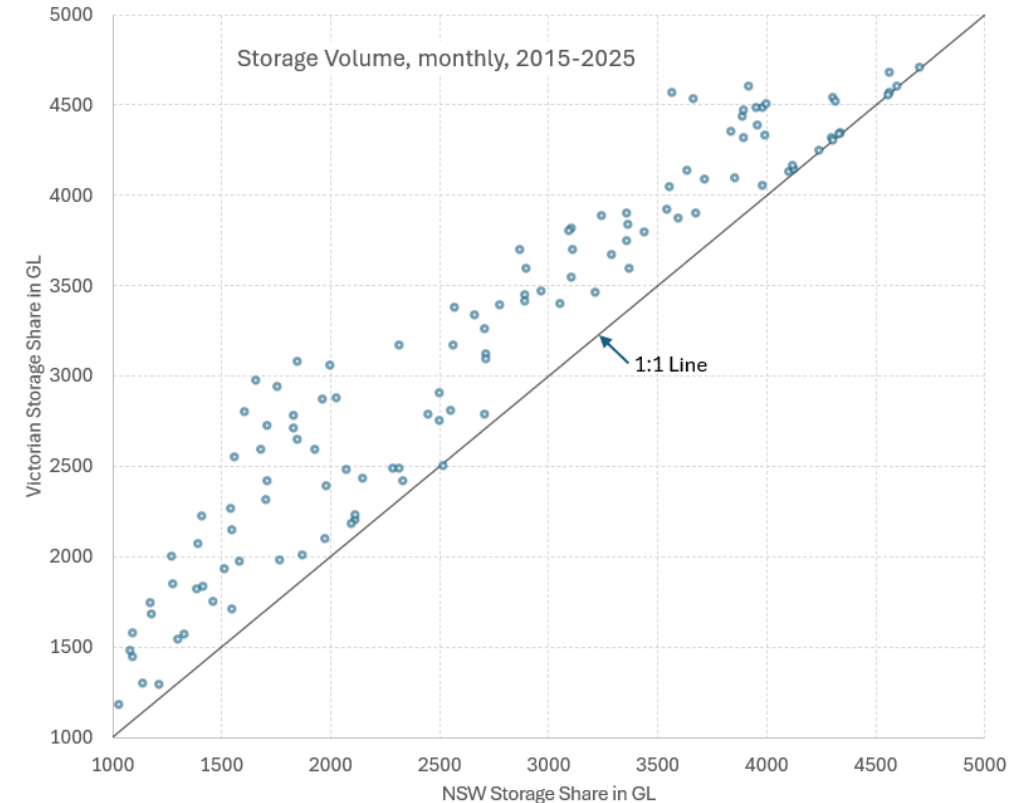


Headwater inflow 6/24 to 5/25 was very low (92% AEP)

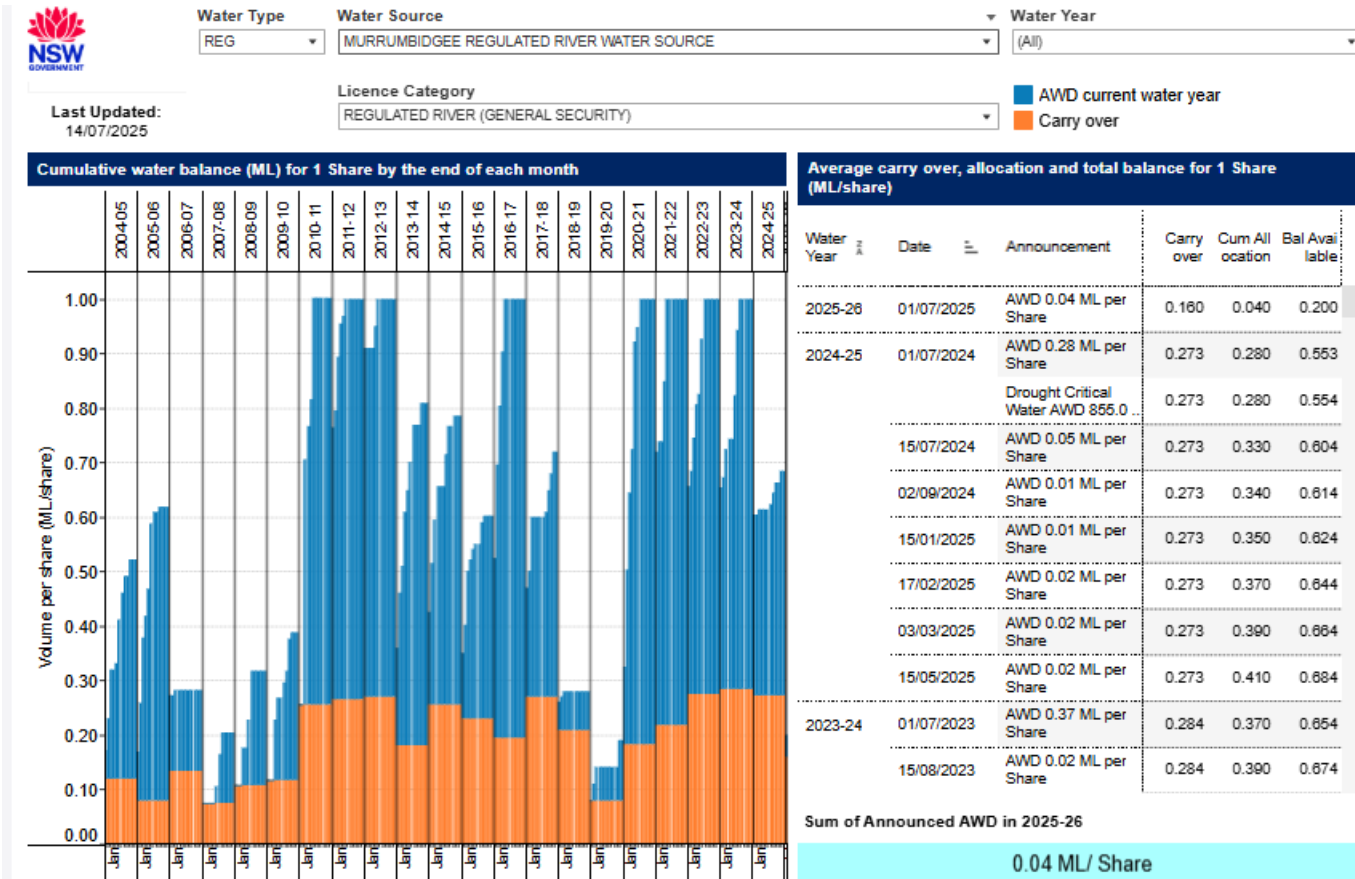
Murray Allocation



| 30 June 2025 | Storage GL (%) | Vic share GL (%) | NSW share GL (%) |
|----------------|----------------|------------------|------------------|
| Dartmouth Dam | 2,428 (63%) | 1,501 (39%) | 856 (22%) |
| Hume Dam | 1,163 (39%) | 572 (19%) | 568 (19%) |
| Lake Victoria | 395 (58%) | 155 (23%) | 140 (21%) |
| Menindee Lakes | 1,295 (75%) | 411 (32%) | 403 (23%) |
| Total | | 2,640 GL | 1,967 GL |



Water Allocation Dashboard



Find allocation history:

<https://water.dpie.nsw.gov.au/our-work/allocations-availability/allocations/allocations-dashboard>

Find dashboards on:

- Share components
- Usage
- Utilisation
- Trade

Water Allocation – our website



Visit here for regular statements:

<https://water.dpie.nsw.gov.au/our-work/allocations-availability/allocations/water-allocation-statements>

[Sign up](#) for updates

Read methodology guides

Water allocation guides for major river valleys

To help people understand the way in which water is allocated to the various priorities and licence types, the department is developing guides on how the water allocation process works in each of the major regulated river valleys – see respective guides below.

[Peel Regulated River Water Source \(PDF. 442KB\)](#) →

[Namoi Regulated River Water Sources \(PDF. 529KB\)](#) →

[Gwydir Regulated River Water Source \(PDF. 1,002KB\)](#) →

[Home](#) > [Our work](#) > [Allocations and availability](#) > [Allocations](#) > [Water allocation statements](#)

What are water allocation statements?

Water allocation statements are issued to announce allocations for a specific water source and licence category. These statements may also be issued to provide a summary of current allocations, outlook and possible future water availability scenarios for major river valleys and systems.

When an opportunity to access a supplementary flow event occurs, the department approves such events and WaterNSW issues 'Supplementary announcements'.

During times of drought, the prevailing drought stage for each river valley is included in statements. The drought stage is determined in accordance with the critical trigger levels outlined in the incident response guides (IRGs) developed by the department. Further information on the IRGs is available at [extreme events](#).

Water allocation statements for the current year and past six years can be accessed below.

Water allocation statements

Receive email updates on water allocations and availability across various sources.

[Subscribe now](#)

2025

| Date and time | Water source |
|---------------|---|
| 10/07/2025 | Macquarie-Cudgegong Valleys (PDF, 1.3 MB) |
| 08/07/2025 | Lachlan Valley (PDF, 1.3 MB) |
| 07/07/2025 | Namoi Valley (PDF, 1.2 MB) |

Our work

| | |
|--|---|
| Allocations and availability | ▲ |
| Allocations | ▲ |
| Water allocation statements | |
| Summary of current water allocations | |
| How water is allocated | |
| Allocations dashboard | |
| Available water determinations | |
| Frequently asked questions | |
| Extraction limits | ▼ |
| Water accounting | ▼ |
| Drought, floods and extreme events | ▼ |
| Controlled allocations | ▼ |
| Temporary water restrictions | ▼ |
| Northern Basin First Flush | |