

# Water Allocation – Murrumbidgee

Dr Shahadat Chowdhury  
Manager, Water Allocation Unit  
Water Group

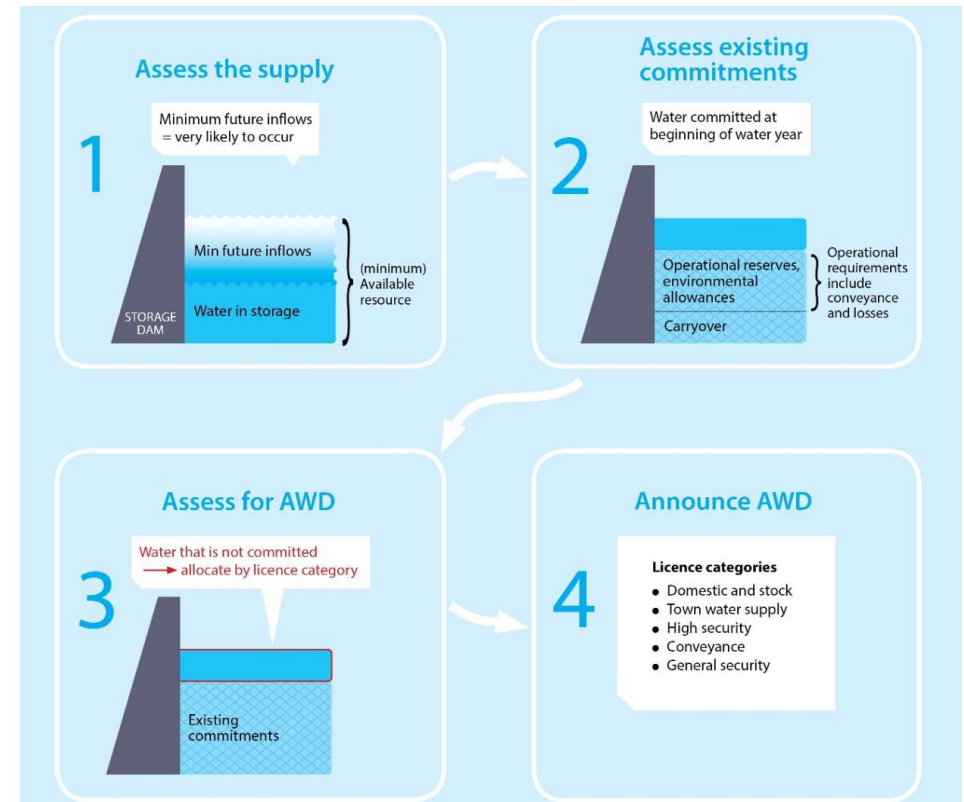
WNSW CAG -Murrumbidgee

Griffith  
20 August 2025

# Water Allocation –reg rivers

$$\text{Surplus} = \text{Current Storage} + \text{Future Inflow} \\ - \text{Commitments} - \text{Overhead}$$

- Surplus is allocated away in priority order.
- Allocations are based on low risk. Assumes dry outlook: low future inflow, high overhead.
- Assessed monthly. Surplus when inflow is higher and/or delivery loss is lower than budgeted.
- Priorities and accounting rules are given in the water sharing plan. Little discretion.
- Allocated water is owned by the licence holders.



# Last Allocation Statement

Allocation to date 19%, GS balance now 35%  
Average carry over 16% (0% ~ 30%)



15 August 2025

## Murrumbidgee Regulated River Water Source

### Water allocation update

General security (GS) access licences in the Murrumbidgee Regulated River Water Source have received an allocation **increase of 4% of entitlement**, and conveyance entitlements have also received their commensurate allocation increases.

The 4% increase in this assessment brings the cumulative GS allocation for the 2025–26 water year to 19%. When combined with the average carryover of 16%, the total water availability to date stands at 35%. Note that individual balances may be higher or lower than this percentage subject to their water use decision.

This improvement in water availability is primarily due to recent inflows into Burrinjuck and Blowering dams and some increase in budgeted future inflow from Snowy Hydro. Notably, the July inflows at both dams correspond to an 83% probability of exceedance.

This resource assessment is based on information available up to 12 August 2025. Any changes after this date will be reflected in the next routine statement.

NSW Department of Climate Change, Energy, the Environment and Water

Licence category	Increment (ML/unit share)	Total 2025–26 (ML/unit share)
Coleambally Irrigation (conveyance)	0	0.8585
Murrumbidgee Irrigation (conveyance)	0.0091	0.6614
Regulated river (conveyance)	0.04	0.19
Regulated river (general security)	0.04	0.19

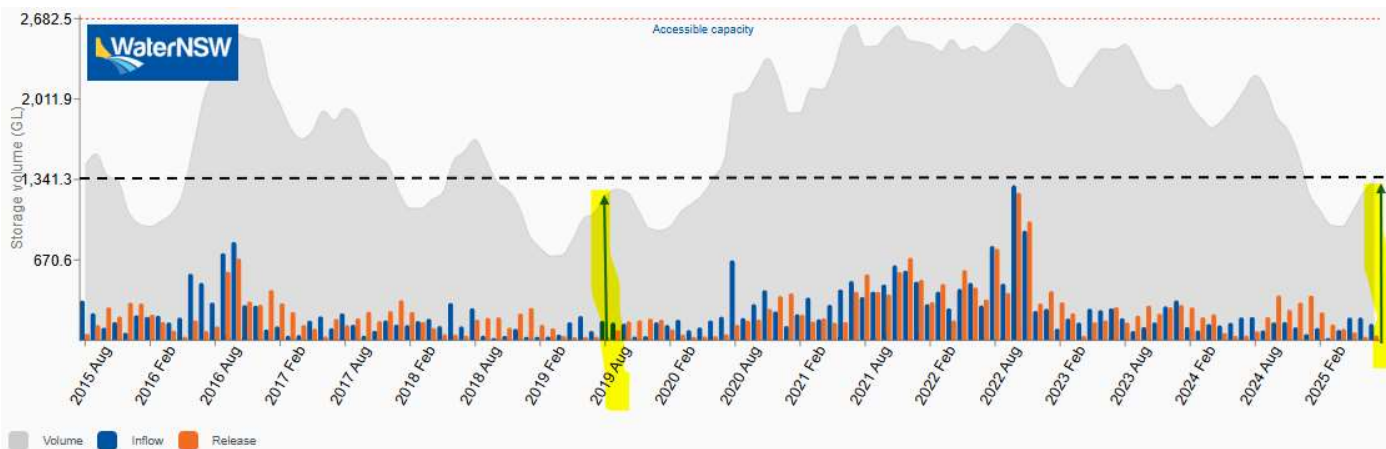


Resource distribution (15 August 2025 to 30 June 2026)	Volume (GL)
Current and future resources <sup>(1)</sup>	2139
<i>Less</i>	
Planned environmental water balance <sup>(2)</sup>	242
Domestic and stock, and local water utility balance	66
Conveyance balance	284
High security balance	319
General security balance <sup>(3)</sup>	666
Murrumbidgee IVT balance <sup>(4)</sup>	19
Losses (08/25 to 06/26) <sup>(5)</sup>	493
Reserves (operational and PSV1&2) <sup>(6)</sup>	50
Higher priority reserve (2026-27) <sup>(7)</sup>	0
<i>equals</i>	
Surplus (or deficit) <sup>(8)</sup>	0

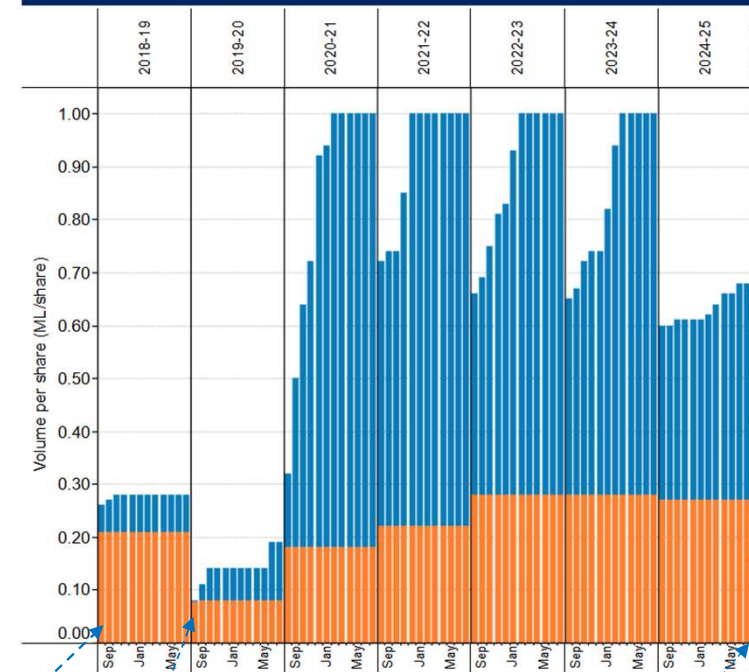
# Low Allocation



Year	2019	2020	2021	2022	2023	2024	2025
Jan to Jul (GL)	186	487	1409	1928	668	581	351



Cumulative water balance (ML) for 1 Share by the end of each month



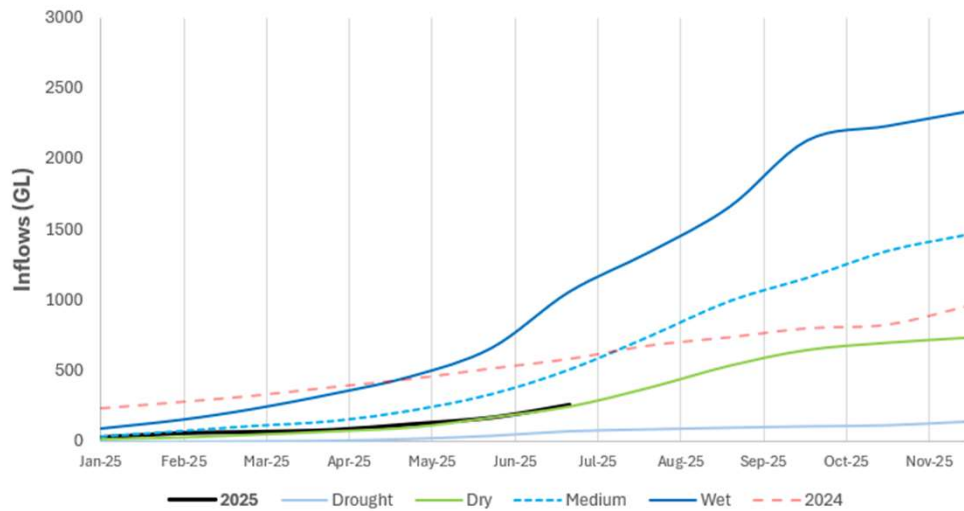
Month:	Jul	Month:	Jul	Month:	Jul
Water Year:	2018-19	Water Year:	2019-20	Water Year:	2025-26
Balance Total:	0.26	Balance Total:	0.08	Balance Total:	0.25
Cum allocations in this Water Year:	0.05	Carry over:	0.08	Cum allocations in this Water Year:	0.09

Disclaimer: Statistical outlook not a forecast!

Repeat of historical inflow conditions	1 Oct 2025	1 Feb 2026
Pre 2004 minimum	19%	19%
Very dry (90% Exceedance)	24%	25%
Dry (75% Exceedance)	28%	30%
Median (50% Exceedance)	36%	42%

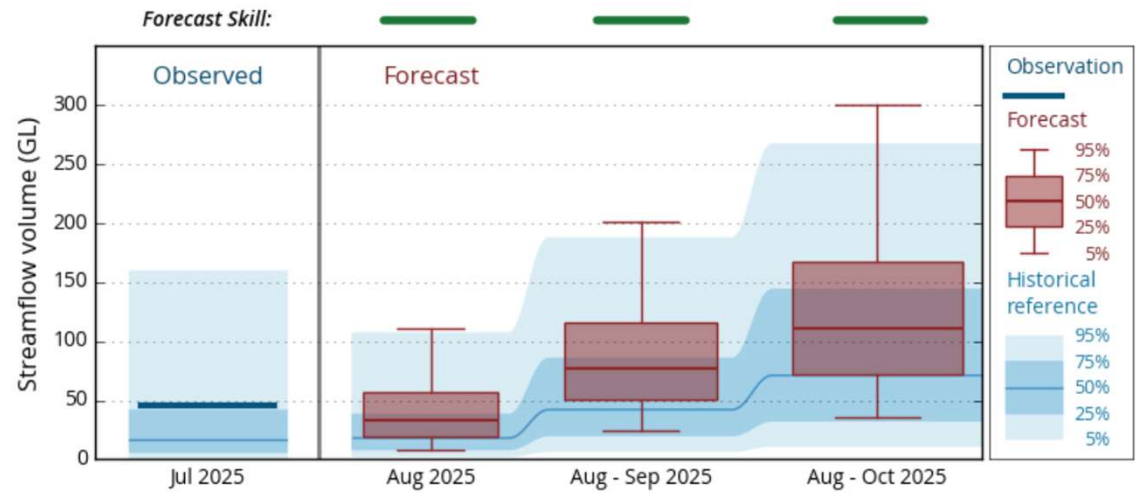


Burrinjuck and Blowering dams inflow trends



Murrumbidgee River below Lobbs Hole Creek (ID: 410761)

Forecast for Aug 2025 - Oct 2025



Generated: 10:27 05/08/2025 (ver. 2.11.1)

©Commonwealth of Australia 2025, Bureau of Meteorology

# Continuous statement improvement

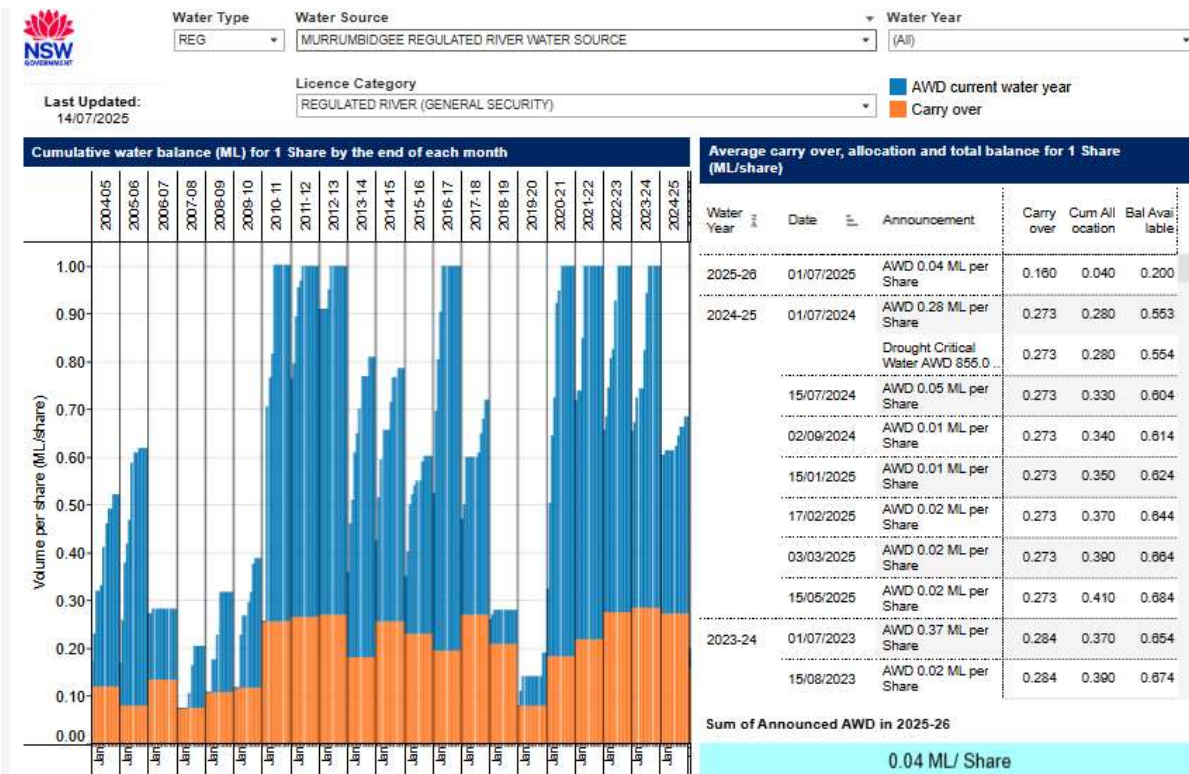


- Continuously refining content in statements –feedbacks welcome
- Table showing current storage volume and a/c balances
- Reducing discretion and more objective determinations
- Second year reserve from December
- Plain language plan rules, useful links, HEW balance, informative notes, table of this year’s allocation
- Inflow forecast from BOM
- Not ceasing allocation statements post full allocation, moving into monthly frequency instead

The collage displays several key components of the water allocation statements:

- Water allocation update:** A section detailing the current status of water allocation, including storage volumes and account balances.
- Water sharing plan rules:** A table listing various water sharing plan rules and their associated parameters.
- Water allocation table:** A detailed table showing water allocation for different users, including storage, HEW, and other categories.
- Water allocation table (2018-19):** A table comparing the current year's allocation with the previous year's (2018-19) across various categories.
- Water allocation table (2019-20):** A table showing the forecasted allocation for the 2019-20 season.
- Water allocation table (2020-21):** A table showing the forecasted allocation for the 2020-21 season.

# Water Allocation Dashboard



Find allocation history:

<https://water.dpie.nsw.gov.au/our-work/allocations-availability/allocations/allocations-dashboard>

Find dashboards on:

- Share components
- Usage
- Utilisation
- Trade

# Water Allocation – our website



Home > Our work > Allocations and availability > Allocations > Water allocation statements

Visit here for regular statements:

<https://water.dpie.nsw.gov.au/our-work/allocations-availability/allocations/water-allocation-statements>

[Sign up for updates](#)

[Read methodology guides](#)

## Water allocation guides for major river valleys

To help people understand the way in which water is allocated to the various priorities and licence types, the department is developing guides on how the water allocation process works in each of the major regulated river valleys – see respective guides below.

[Peel Regulated River Water Source \(PDF, 442KB\)](#) →

[Namoi Regulated River Water Sources \(PDF, 529KB\)](#) →

[Gwydir Regulated River Water Source \(PDF, 1,002KB\)](#) →

## What are water allocation statements?

Water allocation statements are issued to announce allocations for a specific water source and licence category. These statements may also be issued to provide a summary of current allocations, outlook and possible future water availability scenarios for major river valleys and systems.

When an opportunity to access a supplementary flow event occurs, the department approves such events and WaterNSW issues 'Supplementary announcements'.

During times of drought, the prevailing drought stage for each river valley is included in statements. The drought stage is determined in accordance with the critical trigger levels outlined in the incident response guides (IRGs) developed by the department. Further information on the IRGs is available at [extreme events](#).

Water allocation statements for the current year and past six years can be accessed below.

### Water allocation statements

Receive email updates on water allocations and availability across various sources.

[Subscribe now](#)

## 2025

Date and time	Water source
10/07/2025	<a href="#">Macquarie-Cuddeggong Valleys (PDF, 1.3 MB)</a>
08/07/2025	<a href="#">Lachlan Valley (PDF, 1.3 MB)</a>
07/07/2025	<a href="#">Namoi Valley (PDF, 1.2 MB)</a>

### Our work

- Allocations and availability ^
- Allocations ^
- Water allocation statements
  - Summary of current water allocations
  - How water is allocated
  - Allocations dashboard
  - Available water determinations
  - Frequently asked questions
  - Extraction limits v
  - Water accounting v
  - Drought, floods and extreme events v
  - Controlled allocations v
  - Temporary water restrictions v
  - Northern Basin First Flush

