



Department of Climate Change, Energy, the Environment and Water



Unregulated plan expiry and Regulated WSP update

Customer Advisory Groups – Tamworth/Narrabri/Moree

Peter Hyde
Director Inland Planning

8-10 September 2025

Unregulated WSP rules update

1

Update on lapsed plans

-
- Since the 7 plans lapsed on 1 July 2025:
 - Belubula Regulated WSP commenced on 15 August 2025
 - Murrumbidgee Unregulated WSP is being considered for approval and concurrence
 - Gwydir, Namoi & Peel, Macquarie/Wambuul Bogan, Lachlan Unregulated WSPs are undergoing additional consultation on proposed revised access rules
 - Barwon-Darling Unregulated WSP will be considered together with the above plans once they are finalised (3 of the 4 plans under consultation are Barwon-Darling tributaries)
 - We are seeking feedback to understand the potential benefits and impacts of the proposed revised CTPs and will consider feedback received before making final recommendations for the 4 affected plans.

Location of proposed revised cease-to-pump access rules

Gwydir

1. Copeton Dam Management Zone
2. Moredun Creek Water Source
3. Tycannah Creek Water Source

Namoi and Peel

4. Cockburn River Management Zone
5. Maules and Horsearm Creek Management Zone
6. Macdonald River Upstream Woolbrook Management Zone
7. Macdonald and Namoi Rivers Management Zone

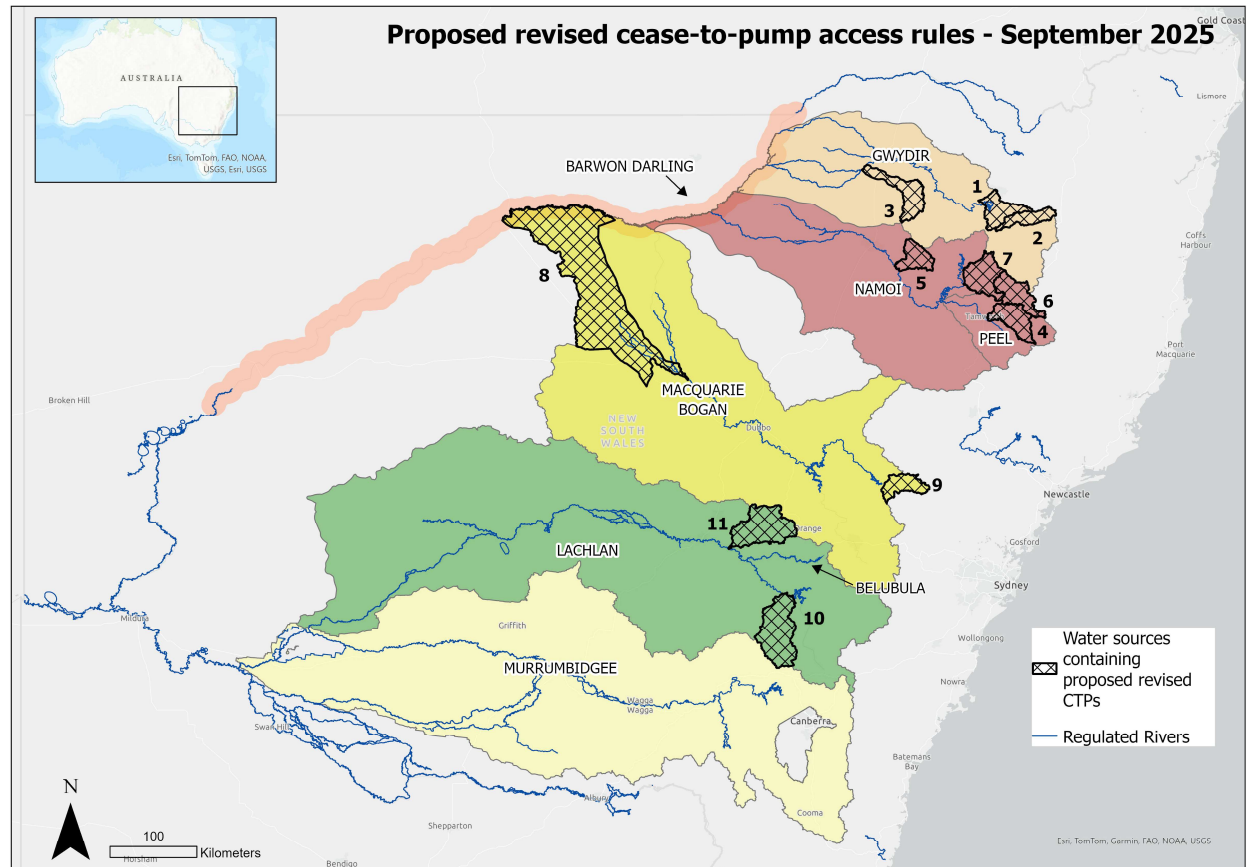
Macquarie/Wambuu Bogan

8. Lower Bogan River Water Source
9. Cudgegong River Downstream Management Zone

Lachlan

10. Boorowa River and Hovells Creek Water Source
11. Lower Mandagery Creek Management Zone

(Management zones named above apply only in part of the corresponding numbered water source shown on the map)



Why further changes are being proposed



-
- The water sources in question have high instream/ecosystem values and support threatened aquatic species
 - They have identified high risks to zero and/or low flows from extraction pressure
 - After reviewing environmental conditions and risks, revised access rules are proposed now rather than by amendment in the previously exhibited draft plans. (This aims to ensure the plans are right from the start and provide greater certainty for the term of the replacement plan)

Why further changes are being proposed



- Information reviewed included
 - cumulative risks to multiple threatened species and critical ecosystem functions
 - flow requirements to support species, ecosystem functions & water quality
 - opportunities to reduce cease-to-flow events and increase the proportion of time species' needs are met
- The main way to protect the identified values is to reduce how often the creeks and rivers stop flowing and to protect low flows
- It is also beneficial to protect baseflows to allow fish to move and breed as well as improve connectivity

Public exhibition and submission information



-
- We would like to hear from you about what the proposed changes would mean for you
 - Public exhibition is open between 4 September and 8 October 2025
 - Submissions can be completed by using the online submission form from the DCCEEW Water website (water.nsw.gov.au/cease-to-pump)
 - For help making a submission, email us at water.enquiries@dcceew.nsw.gov.au
 - Closing date for receipt of submissions is 11:59 pm Wednesday 8 October 2025.
-

Regulated Water Sharing Plan replacement

2

Regulated water sharing plan replacements



Status

- Upper and Lower Namoi and Gwydir regulated plans are due to expire 30 June 2026
- NRC review finalised for Gwydir and recommended replacement – expecting same for Namoi
- Department in discussions to seek a 2-year extension to time to consider issues and consult with communities to inform the replacement plans

Consultation

- Early consultation with key stakeholders and peak groups proposed prior to public exhibition of the replacement plans

Indicative timing

- Planned public exhibition in around March – May 2027

Q&A