

MAP LOCALITY



NOTE: Vulnerability maps are designed only as a guide and may not give a precise indication at any particular site. The maps are not intended to replace an environmental impact assessment. The preparation necessarily involves simplification of complex geological and hydrogeological situations.

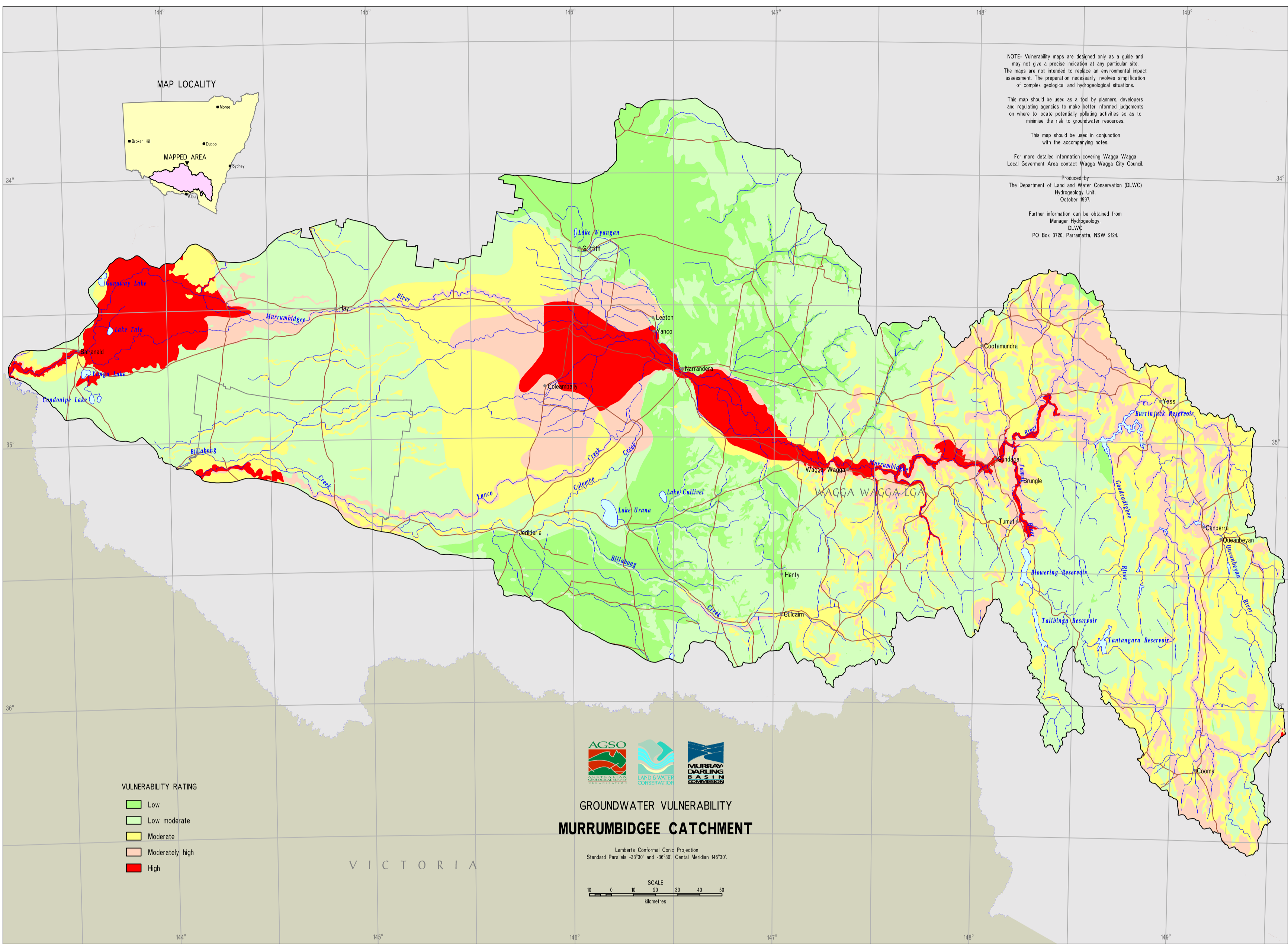
This map should be used as a tool by planners, developers and regulatory agencies to make better informed judgements on where to locate potentially polluting activities so as to minimise the risk to groundwater resources.

The map should be used in conjunction with the accompanying notes.

For more detailed information covering Wagga Wagga Local Government Area contact Wagga Wagga City Council.

Produced by:  
The Department of Land and Water Conservation (DLWC)  
Hydrogeology Unit  
October 1997.

Further information can be obtained from  
Manager Hydrogeology,  
DLWC,  
PO Box 370, Parramatta, NSW 204.



- VULNERABILITY RATING
- Low
  - Low moderate
  - Moderate
  - Moderately high
  - High

AGSO  
LAND & WATER  
CONSERVATION  
MURRUMBIDGEE  
C.A.S.T.N  
CATCHMENT

GROUNDWATER VULNERABILITY  
MURRUMBIDGEE CATCHMENT

Lambert Conformal Conic Projection  
Standard Parallels -33°30' and -36°30'  
Central Meridian 146°30'

SCALE  
0 10 20 30 40 50  
Metres

VICTORIA