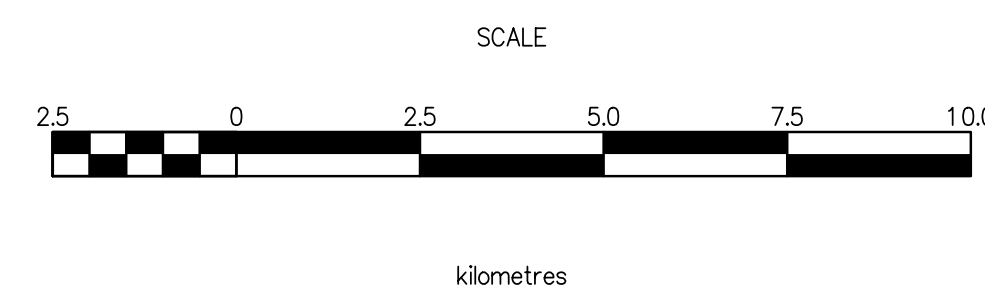
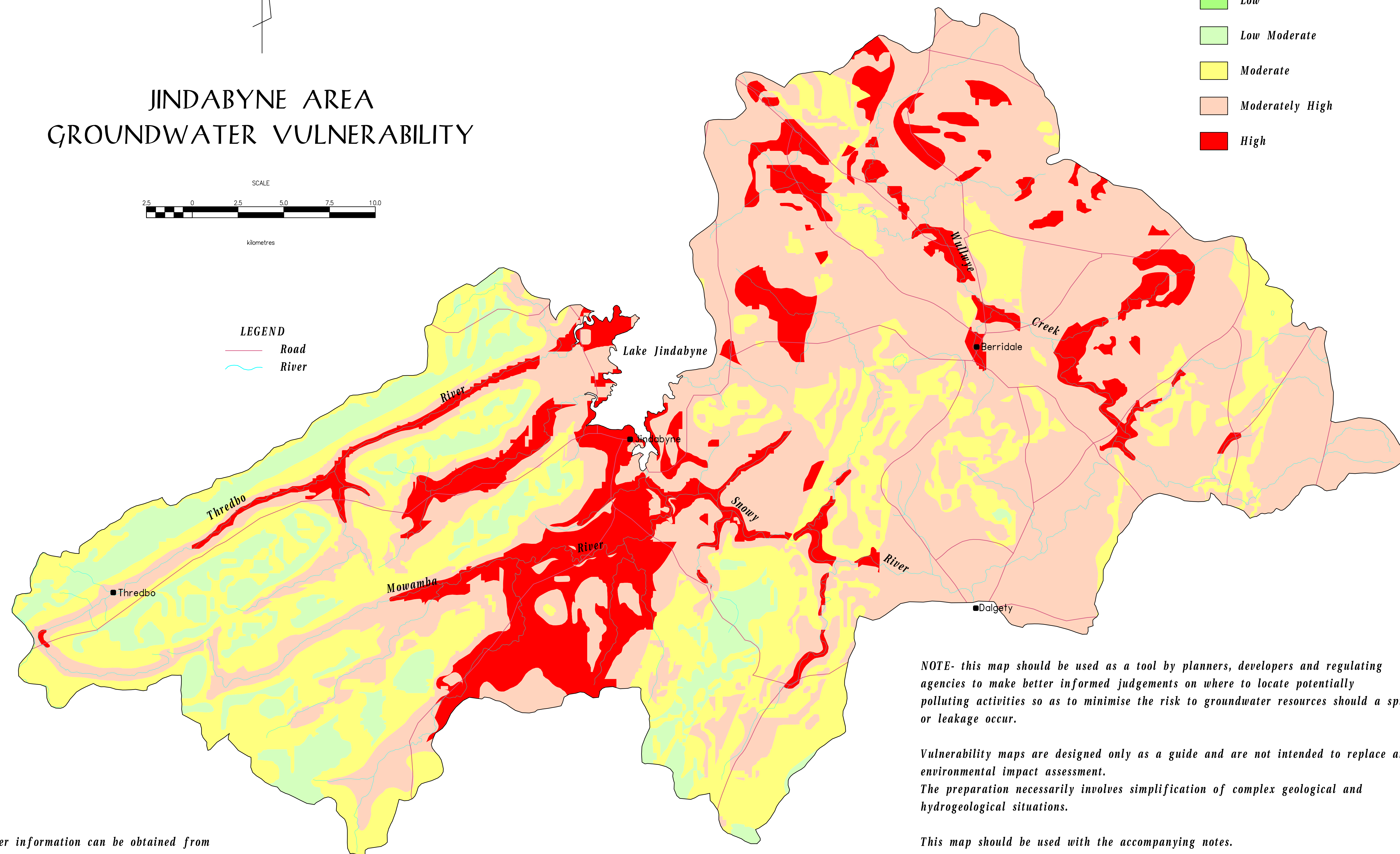
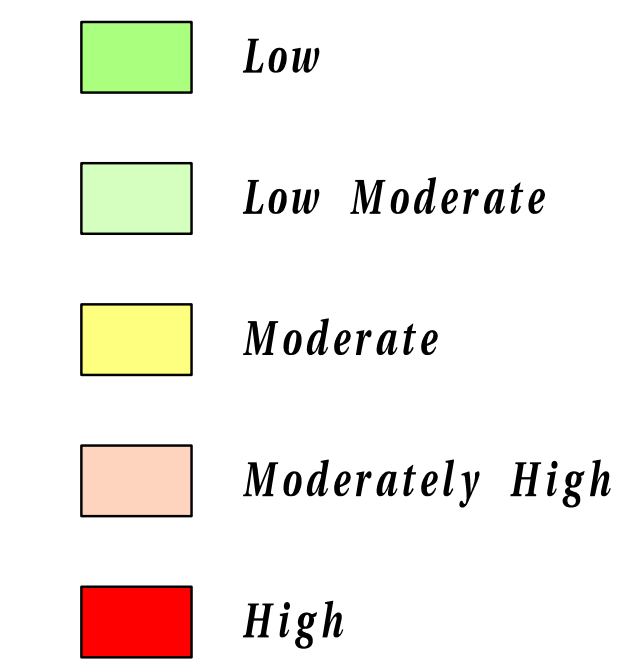


# JINDABYNE AREA GROUNDWATER VULNERABILITY



LEGEND  
— Road  
— River

## VULNERABILITY RATING



*NOTE- this map should be used as a tool by planners, developers and regulating agencies to make better informed judgements on where to locate potentially polluting activities so as to minimise the risk to groundwater resources should a spill or leakage occur.*

*Vulnerability maps are designed only as a guide and are not intended to replace an environmental impact assessment. The preparation necessarily involves simplification of complex geological and hydrogeological situations.*

*This map should be used with the accompanying notes.*

*Further information can be obtained from  
Manager Hydrogeology  
Department of Land & Water Conservation, NSW  
PO Box 3720, Parramatta, NSW 2124  
Australia*

*Produced by  
Department of Land & Water Conservation  
Hydrogeology Unit  
1995*