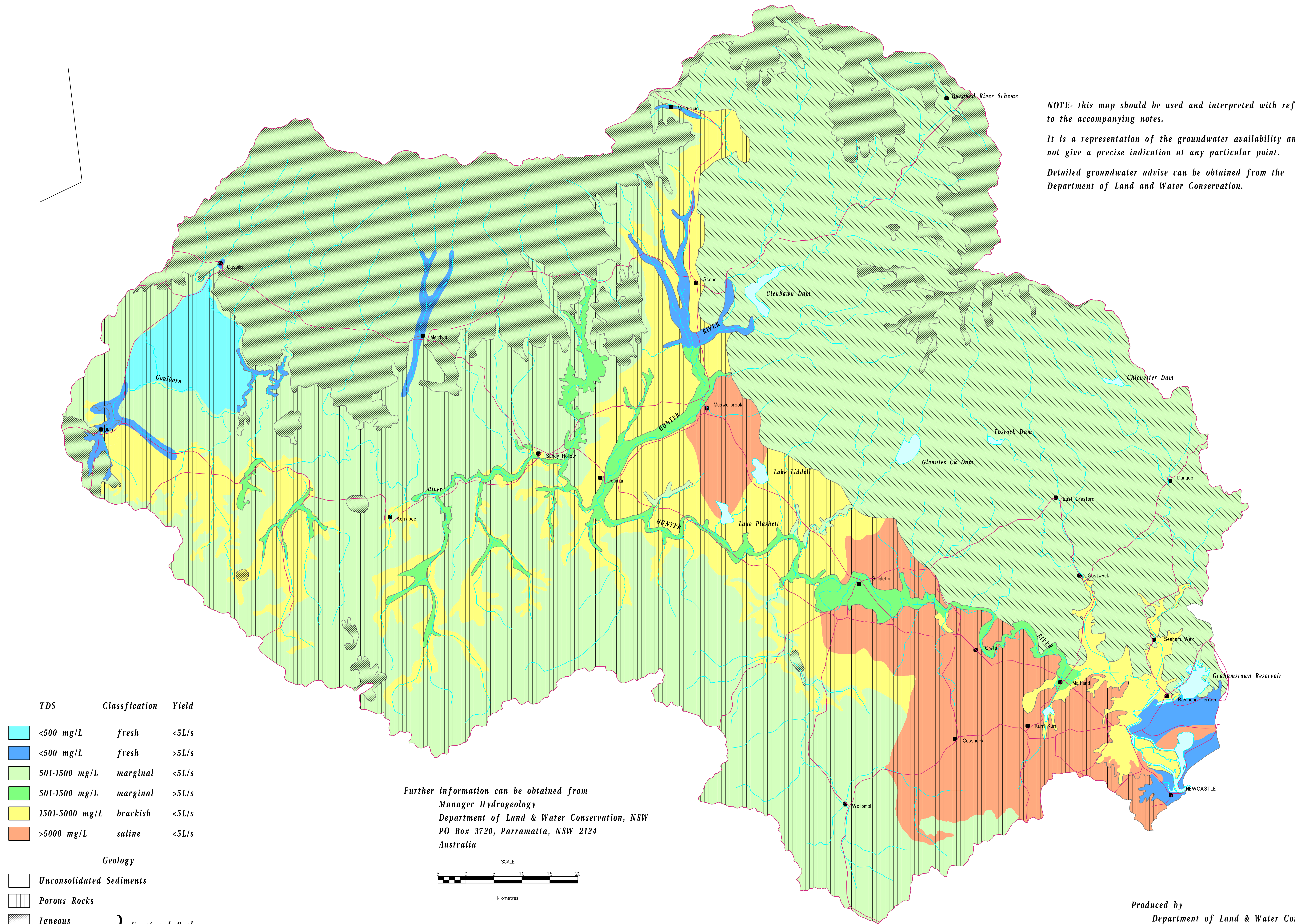
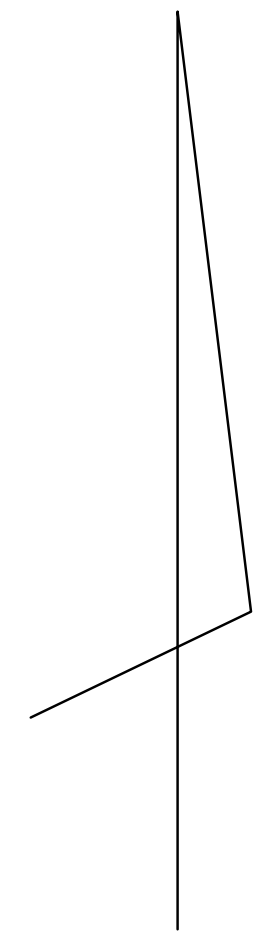




HUNTER VALLEY - GROUNDWATER AVAILABILITY



NOTE- this map should be used and interpreted with reference to the accompanying notes.

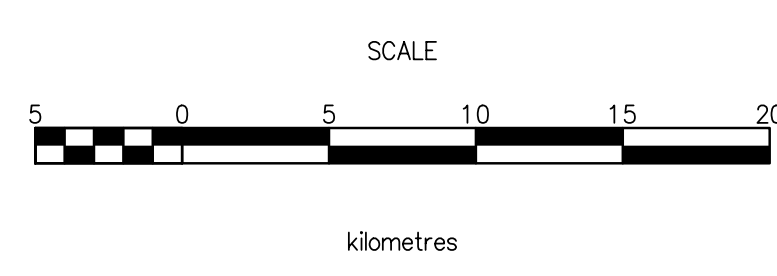
It is a representation of the groundwater availability and may not give a precise indication at any particular point.

Detailed groundwater advise can be obtained from the Department of Land and Water Conservation.

TDS	Classification	Yield
	<500 mg/L fresh	<5L/s
	<500 mg/L fresh	>5L/s
	501-1500 mg/L marginal	<5L/s
	501-1500 mg/L marginal	>5L/s
	1501-5000 mg/L brackish	<5L/s
	>5000 mg/L saline	<5L/s

Geology	
	Unconsolidated Sediments
	Porous Rocks
	Igneous
	Metasediments
} Fractured Rock	

Further information can be obtained from
 Manager Hydrogeology
 Department of Land & Water Conservation, NSW
 PO Box 3720, Parramatta, NSW 2124
 Australia



Produced by
 Department of Land & Water Conservation
 Hydrogeology Unit
 1995