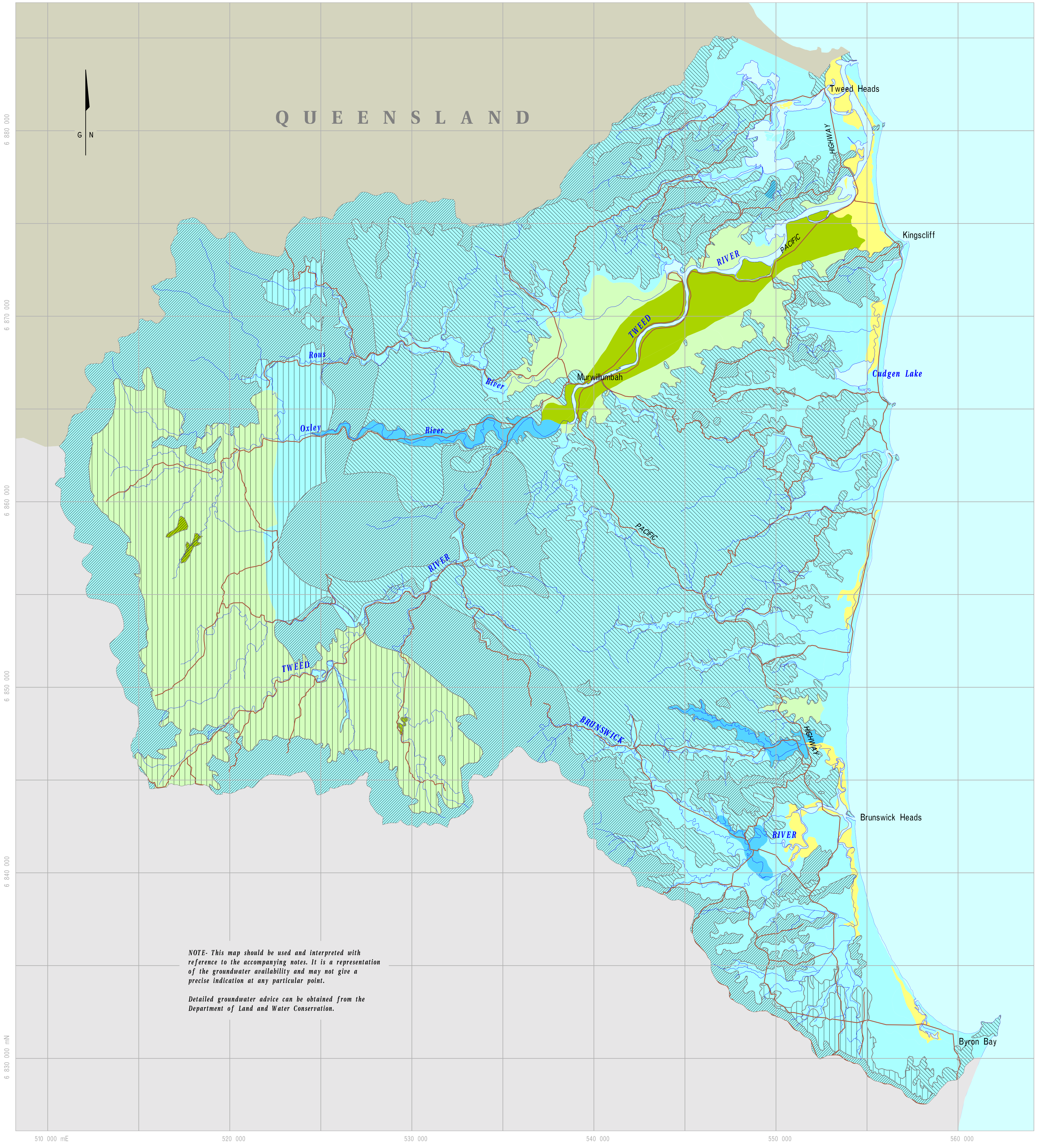
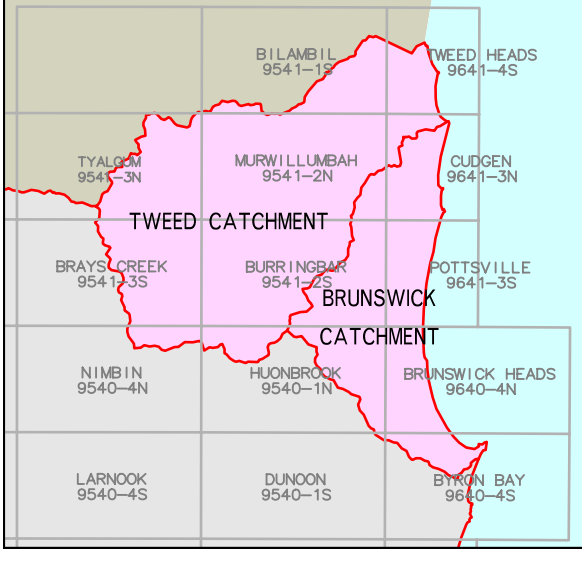


GROUNDWATER AVAILABILITY TWEED - BRUNSWICK CATCHMENTS



*NOTE: This map should be used and interpreted with reference to the accompanying notes. It is a representation of the groundwater availability and may not give a precise indication at any particular point.
Detailed groundwater advice can be obtained from the Department of Land and Water Conservation.*

1 : 25 000 MAP COVERAGE



Further information can be obtained from
Manager Hydrogeology
Department of Land and Water Conservation
PO Box 3720, Parramatta, NSW 2124.

Grid lines shown at 5000 metre intervals
from False Origin of AMG Zone 56.

Produced by the Department of Land and
Water Conservation Hydrogeology Unit,
March 1997.

SCALE

kilometres

TDS	CLASSIFICATION	YIELD
< 500 mg/L	fresh	< 1.5 L/s
< 500 mg/L	fresh	> 1.5 L/s
501 - 1500 mg/L	marginal	< 1.5 L/s
501 - 1500 mg/L	marginal	> 1.5 L/s
1501 - 3000 mg/L	brackish	> 2.5 L/s

GEOLOGY	
Unconsolidated Sediments	
Porous Sedimentary Rocks	
Igneous	Fractured Rock
Metasediments	